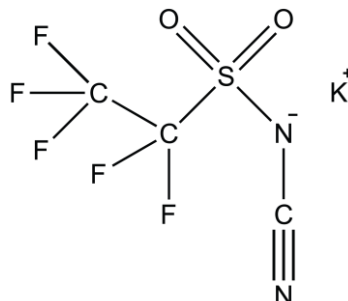


**POTASSIUM CYANO(PENTAFLUOROETHANESULFONYL)IMIDE**

**CAS Number:** N/A

**Molecular Formula:** C<sub>3</sub>F<sub>5</sub>KN<sub>2</sub>O<sub>2</sub>S

**Molecular Weight:** 262.20 g/mol



**Solubility:**

**Water**.....soluble

**Ethanol**.....soluble

**Acetonitrile** .....soluble

**Dichloromethane**.....insoluble

**PROVISCO CS Ltd.**

Krizikova 70 tel.: +420541633824  
612 00 Brno www.proviscocs.com  
Czech Republic proviscocs@proviscocs.com