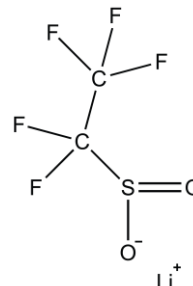


LITHIUM PENTAFLUOROETHANESULFINATE

CAS Number: N/A
Molecular Formula: C₂F₅LiO₂S
Molecular Weight: 190.02 g/mol



AppearanceWhite to yellowish crystalline powder
¹⁹F NMR SpectrumConforms to structure
Purity (¹⁹F NMR)min. 97.0 %